

SyAM Software, Inc.

**Server Monitor
Desktop Monitor
Notebook Monitor
V3.21**

**Local System Management Software
User Manual**

Revision A
October 2006

© 2006 SyAM Software, Inc.
All rights reserved. SyAM Software and the SyAM Software logo are trademarks of SyAM
Software, Inc.
All other trademarks are the property of their respective owners.

Information contained in this document is assumed to be accurate at the time of
publishing. SyAM Software reserves the right to make changes to the information
contained in this document at any time without notice.

For additional information, sales, or technical support, contact SyAM Software

www.syamsoftware.com

Part Number 010109A-EN

Table of Contents

Introduction.....	5
SyAM Software Modules.....	6
Compatibility.....	6
Deployment Options.....	7
Chapter 1: Installation and Configuration.....	9
Installation Instructions – Windows.....	10
Installation Instructions – Linux.....	10
Firewall Security	10
SyAM Program Menu Options (Windows).....	11
Uninstalling SyAM (Windows).....	12
Uninstalling SyAM (Linux).....	12
Chapter 2: Logging In.....	13
Browsing to the SyAM Web Server.....	14
Ending the Session.....	15
Chapter 3: The SyAM User Interface.....	16
The SyAM User Interface.....	17
Interface Layout.....	17
Health Colors.....	18
Icons.....	18
Management Tree.....	19
System Detail Tab.....	20
Power Management Tab	22
(This feature is only available through the SyAM Central Manager).....	22
Hardware Detail Tab.....	24
Network Detail Tab.....	24
Storage Detail Tab.....	25
RAID Management.....	27
Deleting a RAID Set.....	31
Software Detail Tab.....	32
Chapter 4: Configuring System Alerts	34
System Alert Matrix.....	35
Monitored Sensor Types.....	36
Logical Sensors.....	36
Notification Settings – Configuring email alerting.....	37
Removing a Sensor Instance From the System Alert Matrix.....	38
SyAM Alerting Enhancements.....	39
SyAM Integration into Enterprise Frameworks	39
Chapter 5: Contact Details & Glossary.....	40
Contact Details.....	41
Glossary.....	41
Chapter 6: SyAM Central Management Software.....	44

Table of Figures

Figure 1: Individual systems being managed via the SyAM Local Interface.....	7
Figure 2: Multiple systems being managed by Central System Management software....	8
Figure 3: SyAM's program menu.....	11
Figure 4: SyAM programs Utilities Menu.....	11
Figure 5: Removing SyAM - Windows.....	12
Figure 6: Removing SyAM - Linux.....	12
Figure 7: Windows and Linux Login Screens.....	14
Figure 8: Successful Logout.....	15
Figure 9: SyAM Local User Interface Layout.....	17
Figure 10: Header Bar.....	17
Figure 11: SyAM Health State Colors.....	18
Figure 12: Tree Expanded to Display Monitored Sections.....	19
Figure 13: System Detail Tab.....	20
Figure 14: System Detail Tab Continued.....	20
Figure 15: Power Management Tab.....	22
Figure 16: Hardware Detail Tab.....	24
Figure 17: Network Detail Tab.....	25
Figure 18: Storage Detail Tab.....	25
Figure 19: Storage Details – Managed RAID Controllers.....	27
Figure 20: RAID Controller Details Screen.....	28
Figure 21: Physical Drives – Choosing drives for the Array.....	29
Figure 22: Available Array - Configuring the RAID Set.....	29
Figure 23: RAID Set Details – Information on Configured RAID Set.....	30
Figure 24: Removing a Hot Spare drive.....	30
Figure 25: RAID Set Details – Deleting a RAID set.....	31
Figure 26: Software Detail Tab.....	32
Figure 27: End the Process.....	32
Figure 28: Confirm to End the Process.....	33
Figure 29: Starting a Service.....	33
Figure 30: Confirm to Start the Service	33
Figure 31: Stopping a Service.....	33
Figure 32: Confirm to Stop the Service	33
Figure 33: System Alert Matrix.....	35
Figure 34: Entering Notification Information.....	37

Introduction

SyAM Software provides a comprehensive, simple to use set of system management products called Server Monitor, Desktop Monitor, and Notebook Monitor. Each of these products have features specific to their relevant system's capabilities and functions, as well as a large number of common features. Their user interfaces are identical. These products enable several IT benefits. Among them are predictive alerting to pending failures, system configuration, unattended monitoring and alerting, remote management, and reporting. The products dynamically discover the hardware and software operating environment, and manage all physical environmental sensors available and operating system resources. Users can view them and be alerted if they exceed their thresholds.

There are two levels of system management. Local System Management software provides a single system view. Central System Management software provides a unified view of all of your systems, and also provides more comprehensive features.

The Local System Management products are:

- *Server Monitor Local*
- *Desktop Monitor Local*
- *Notebook Monitor Local*

The Central System Management products are:

- *Server Monitor Central*
- *Desktop Monitor Central.*

(An instance of Server Monitor Central or Desktop Monitor Central is also referred to as a "Central Manager" in the remainder of this document.)

This user manual describes the Local System Management software. The following sections will describe the product differences, functions of the Local System Management software, and highlight areas of additional functionality available through the Central System Management software.

SyAM Software Modules

Local System Management software contains three products;

- **Server Monitor Local**- Used for server platforms running server operating systems and RAID storage
- **Desktop Monitor Local** - Used for desktop/workstation platforms
- **Notebook Monitor Local** – Used for notebook computer's that are on and off the network and may have hardware or software changes made while off site.

These products can be installed on any Intel architecture x86/x64 platform running one of the supported operating systems.

Compatibility

<i>Operating System</i>	<i>Server Monitor Local</i>	<i>Desktop Monitor Local</i>	<i>Notebook Monitor Local</i>
<i>Windows 2003 Server</i>	■		
<i>Windows 2000 Server (SP3 or above)</i>	■		
<i>Windows XP Professional</i>	■	■	■
<i>Windows 2000 Professional (SP3 or above)</i>	■	■	■
<i>Redhat Enterprise Server 4, ES3 (Update 4) (2.6.9-5.ELsmp / 2.4.21-27.ELsmp)</i>	■		
<i>Redhat Workstation 4, WS3 (Update 4) (2.6.9-5.ELsmp / 2.4.21-9.ELsmp)</i>	■	■	■
<i>Redhat Desktop 9 (2.4.20-8smp)</i>	■	■	■
<i>SuSE Enterprise Server 9 (2.6.5-7.97-default)</i>	■		
<i>SuSE Professional 9.2 (2.6.8-24-default)</i>	■	■	■
<i>Novell Linux Desktop 9 (2.6.5-7.111-default)</i>	■	■	■
<i>Fedora Core 3 (2.6.9-1.667)</i>	■		

Linux x64 Operating System Requirements

If you are running Redhat/Fedora Core x64 Linux distribution, you must load the Compatibility Arch Support (Multilib Support Packages). To check if this is loaded look in: system settings, add/remove applications and scroll to the bottom to verify that this package is installed. If not please install it.

System Requirements

- 160MB Disk space
- 256MB Memory

Browser Requirements

- Internet Explorer 6+ (Service Pack 1)
- Mozilla Firefox (V1.0.x or above)

Deployment Options

During installation you are presented two options of deployment;

- Local – This installs SyAM's web server and management agent, which enables you to manage the system directly via a web browser. You may also manage the system via the system running the Central System Management software.
- Agent – This does not install SyAM's web server, it installs the management agent only. In this case the system is only going to be managed via the system running the Central System Management software.

Administrator's use Internet Explorer or Firefox to browse to the local interface of the system being managed



Agents send event notification messages to administrators via email

Figure 1: Individual systems being managed via the SyAM Local Interface

Administrator's use Internet Explorer or Firefox to browse to the Central Manager interface to manage all systems

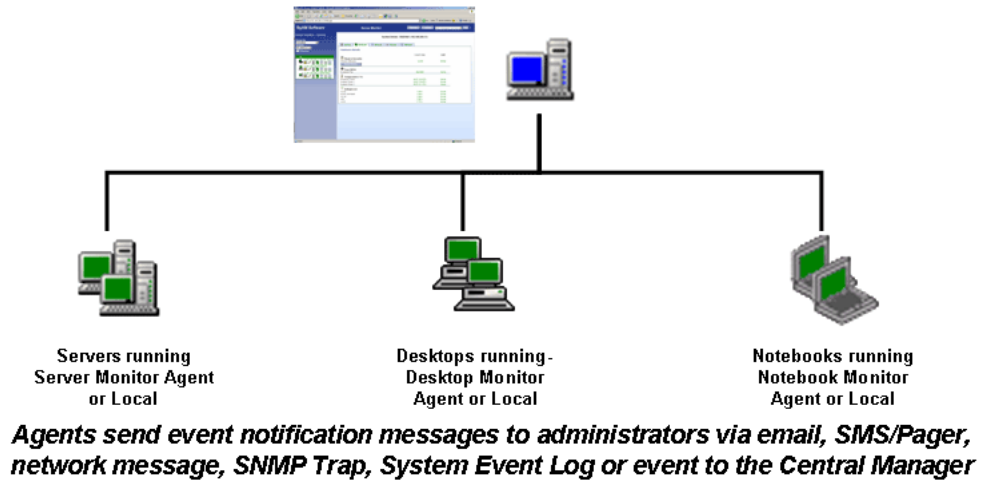


Figure 2: Multiple systems being managed by Central System Management software.

Chapter 1: Installation and Configuration

This chapter provides step-by-step installation and configuration instructions for SyAM Local System Management software on Windows and Linux Operating System Platforms

It is recommended that you print off the quick start guide before installing the software too. This simple document will step you through installation and email configuration in a few minutes.

Installation Instructions – Windows

1. Either load the SyAM Software CD and from the menu choose the product version you wish to install, or double click the downloaded SyAM executable. Then just follow the Install Wizard instructions.
2. Choose the language of the user interface.
3. Choose the destination folder (This can not contain any spaces in the name)
4. Choose either the Local or Agent installation. (default=Local)
5. To enable security through 128-bit data encryption from SyAM Server Web Server to the browser, choose the SSL option. (default=No)
6. After the installation has finished, the SyAM services will start and dynamically discover and configure your system's monitoring environment.

Installation Instructions – Linux

1. Download the required product version or copy it from the SyAM Software CD, to the Linux system.
2. Extract the files and change permission to execute the files
3. Enter ./install – then follow the on screen instructions
4. Choose the language of the user interface.
5. Choose the destination folder (This can not contain any spaces in the name)
6. Choose either the Local or Agent installation. (default=Local)
7. To enable security through 128-bit data encryption from SyAM Server Web Server to the browser, choose the SSL option. (default=No)
8. After the installation has finished, the SyAM services will start and dynamically discover and configure your system's monitoring environment.

Firewall Security

The following ports must be opened if you are using a firewall on your Linux system. They are automatically opened on Windows 2003 and XP Pro systems during the installation.

- 3894 – Used for agent management service
- 3930 – Used for web server if installed
- 5800 – Used for Remote Console access from Central Manager
- 5900 – Used for Remote Console access from Central Manager

SyAM Program Menu Options (Windows)

For Windows installations a set of options under the Programs Menu are provided.

Menu Options

On the start menu, select

<Programs>

<SyAM>

<Utilities>

<Enable SCSI SMART Monitoring>

<XP-2003 Port Update>

<Release Notes>

<Remote Console User Settings>

<SyAM Server/Desktop/Notebook Console>

<User Manual>

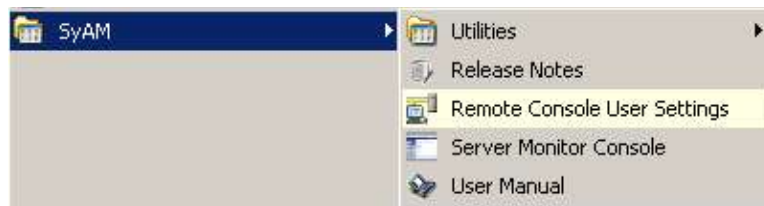


Figure 3: SyAM's program menu

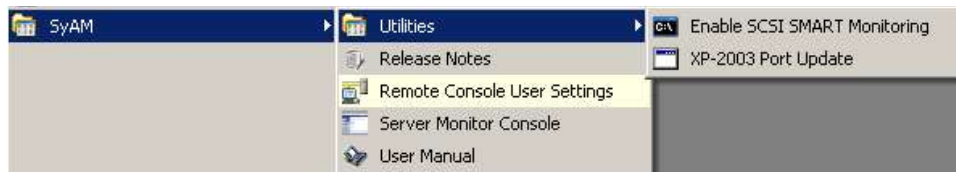


Figure 4: SyAM programs Utilities Menu

If Windows XP / 2003 Service packs are updated to the system after the SyAM software is installed then you must open up the required firewall port by running the XP-2003 Port Update from the Utilities Menu. This will open up the required firewall ports to allow SyAM to function correctly.

By default your system's drives are SMART-monitored for predictive-drive failure analysis if they are ATA or S-ATA. However if your system utilizes a SCSI Disk drive then you must choose "Enable SCSI SMART Monitoring" and reboot your system to enable this feature.

Uninstalling SyAM (Windows)

To remove the SyAM software from the windows system:

1. On the start menu, select <Settings> <Control Panel> <Add/Remove Programs>
2. Highlight SyAM and select <Remove>. You will be prompted to confirm this action.
3. Following removal, if SyAM software is to be reinstalled then a system restart is required.

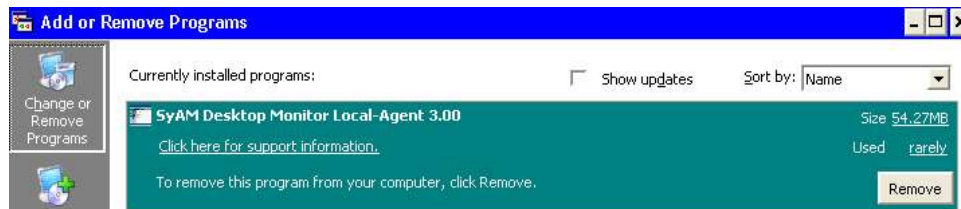


Figure 5: Removing SyAM - Windows

Uninstalling SyAM (Linux)

To remove the SyAM software from the Linux system:

1. Go to the top-level directory where the SyAM software was installed.
2. `./uninstall`

The software will be uninstalled.

```
d915glvg-emc:/syam #  
d915glvg-emc:/syam #  
d915glvg-emc:/syam #  
d915glvg-emc:/syam #  
d915glvg-emc:/syam #  
d915glvg-emc:/syam # ls  
..  . java jetty smad system_monitor uninstall  
d915glvg-emc:/syam # ./uninstall  
are you sure you want to uninstall [y/n]? y  
uninstalling product...  
shutting down services... done  
removing services from system service list... done  
removing /syam... done  
uninstall complete  
d915glvg-emc:/syam #
```

Figure 6: Removing SyAM - Linux

Chapter 2: Logging In

This chapter provides details on logging into the SyAM User Interface

Browsing to the SyAM Web Server

Open a supported web browser on any system and access the SyAM user interface on any system with the SyAM Local Management Software web server installed. Then enter:

<http://IPADDRESS> or the MACHINENAME:3930

Example <http://192.168.1.19:3930>

Example <http://FILESERVER1:3930/>

If you enabled SSL during installation, you are required to type “https” instead of “http”:

Example: <https://IPADDRESS> or <https://MACHINENAME:3930>

This will bring you to the log in screen.

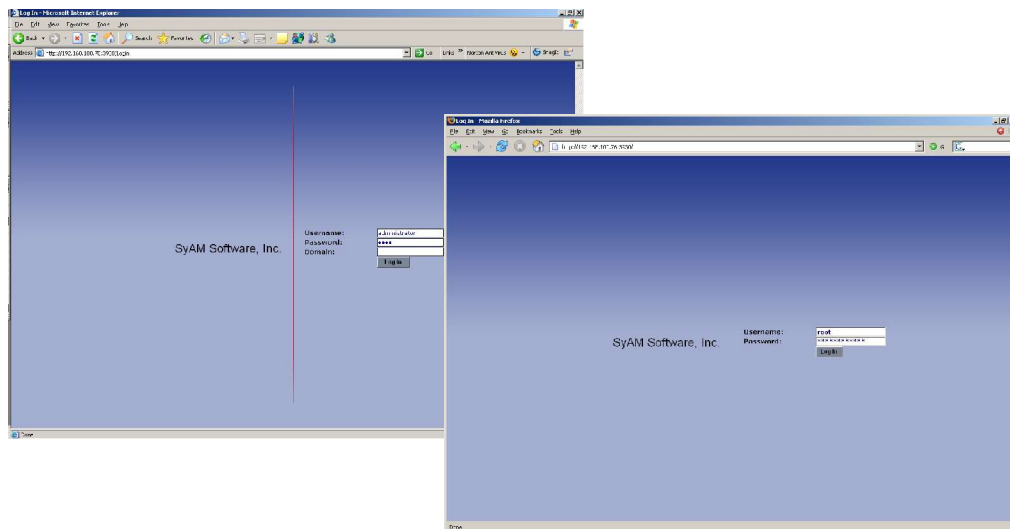


Figure 7: Windows and Linux Login Screens

The SyAM web server does not maintain its own separate set of users and passwords. It requests the operating system to log you in, so uses the accounts that are already in place on your system. To login you must satisfy the following conditions:

For Standalone systems (not in a Windows Domain)

- The User name and Password must be valid on the system you are logging into.
- The User must have Administrator rights on the system.

For systems within a Windows Domain

- The User name and Password must be valid in the Domain.
- The User must have "Domain Admin" rights within the Windows Domain
- A Valid Domain Name for the system must be entered in the Domain field.

For Linux systems

- The User name and Password must be valid on the system you are logging into.

Ending the Session

When you have completed your management session, choose the Log Out button on the main header bar. Successful logout returns you to the login screen:

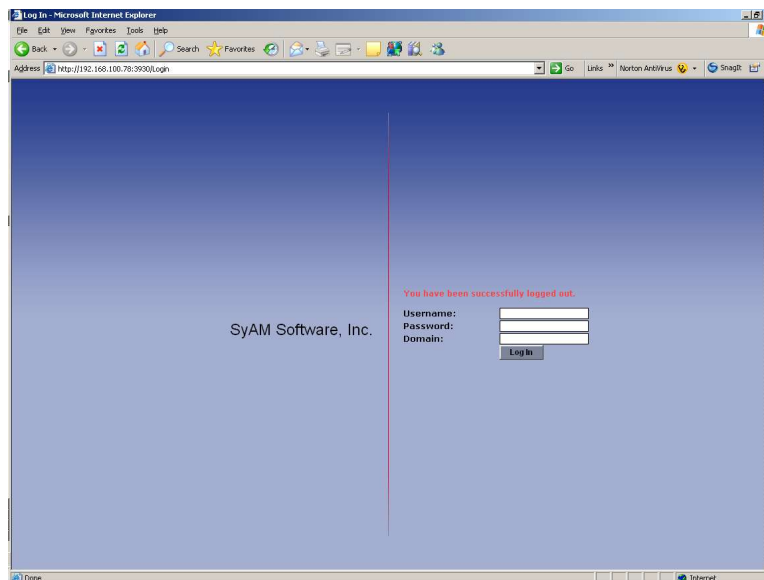


Figure 8: Successful Logout

For added security you will be logged out automatically after 30 minutes of inactivity. A message box will appear on screen if you are using Internet Explorer to let you know that you need to log back in. If you are using a Firefox browser you will be logged out and put back to the login screen.

Chapter 3: The SyAM User Interface

This chapter describes how to use the SyAM Local System Management software. It also points out some advanced features that are available in the Central System Management products.

The SyAM User Interface

SyAM Local System Management software provides administrators with the ability to view the system's current configuration and the status of the monitored sensors and resources. Additionally, the administrator can configure email notification settings.

Interface Layout

The structure of the interfaces is common whether you are viewing a Notebook, Desktop or Server Monitor Local. The system being monitored is represented in the tree on the left hand side and the detailed information being accessed is presented on the main right hand side. Because Local System Management software provides a single system view, there is only a single system in the tree. Central System Management software displays many systems in the tree.

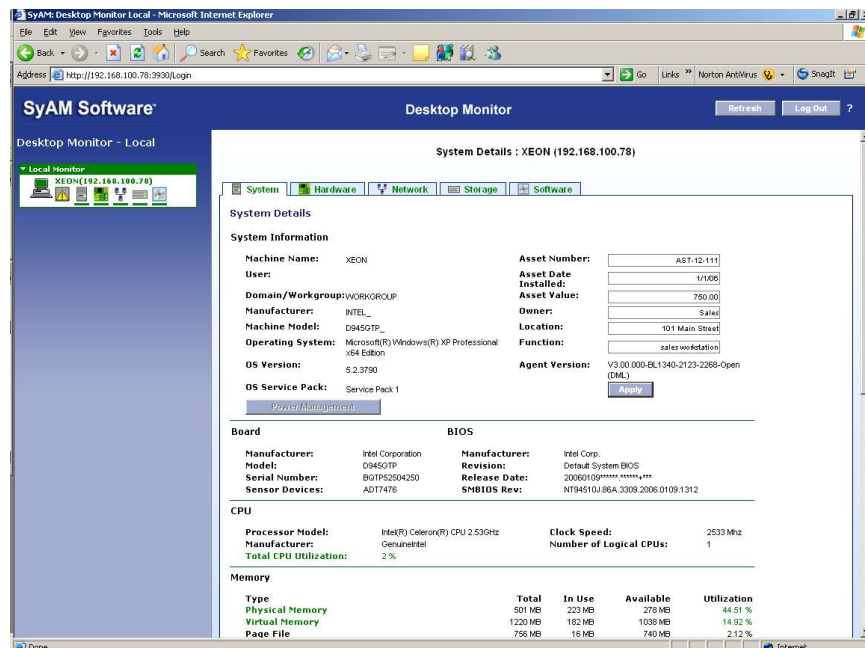


Figure 9: SyAM Local User Interface Layout

Header Bar

The header bar has three function buttons – Refresh, Log out and Online Help.

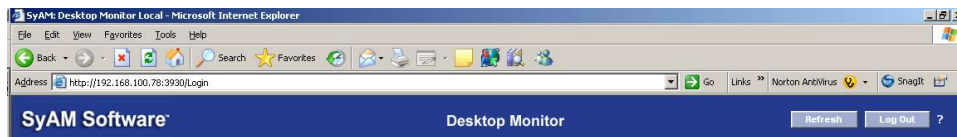


Figure 10: Header Bar

Health Colors

In order to quickly identify and correct system problems, SyAM software uses a consistent color scheme to represent the health and functionality of systems and their components. These colors can be seen in every level of monitoring, from the instance of the component to the component category and section.. The health of each monitored system is updated on a regular interval. Any change in the status of the system will cause a change in the health color. The health color will remain in the changed state until the issue is resolved.








	Green = Fully Functional
	Amber = Warning
	Red = Critical
	Grey = System state pending, currently unknown
	Purple = System is no longer responding
	Blue = Agent service has been manually shutdown
	Black = System has been shutdown

Figure 11: SyAM Health State Colors

Icons

There are three icons that represent the type of SyAM software running on the managed system.

Server Monitor Local/Central



Desktop Monitor Local/Central



Notebook Monitor Local









Management Tree



Figure 12: Tree Expanded to Display Monitored Sections

Tree Icons

	System Alert Matrix – Provides access to the thresholds, sample,reset periods and notification options for all of the monitored hardware and software sensors within the system
	System – Provides system board, memory, CPU, slot, display, port information and status of the CPU and Memory utilization being monitored, in addition memory error information is displayed.
	Hardware – Provides sensor information and current status on physical sensors being monitored within the system
	Network – Provides network adapter configuration information and performance for all configured adapters within the system
	Storage – Provides physical storage device, storage controller, logical device information and health status for the storage devices and managed RAID controllers.
	Software – Provides information on OS services, processes, and installed applications. Also provides remote and process management.

System Detail Tab

The System Tab displays detailed information on the system's configuration, including BIOS, vendor information, operating system, location, machine name, function, memory and CPU utilization, etc. Administrators can choose to enter additional system information by filling in the fields at the top of the screen. The system's power management policies can be viewed and re-configured remotely by clicking on the Power Management button.

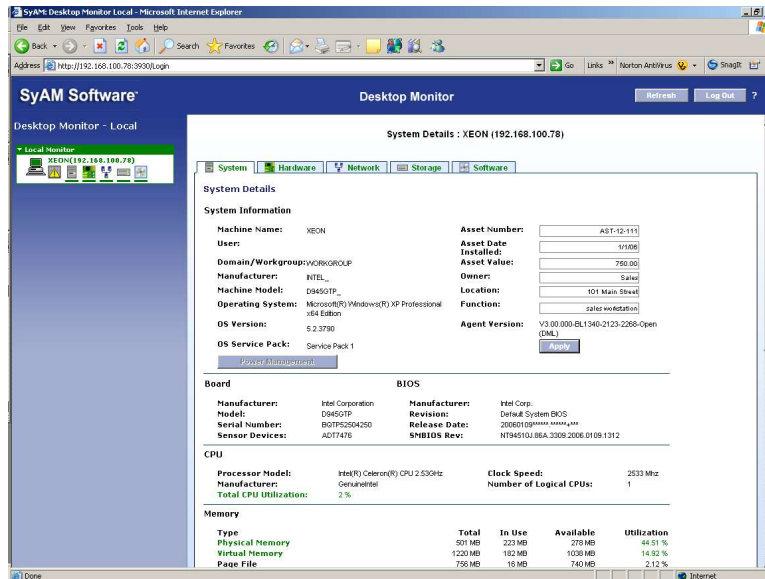


Figure 13: System Detail Tab

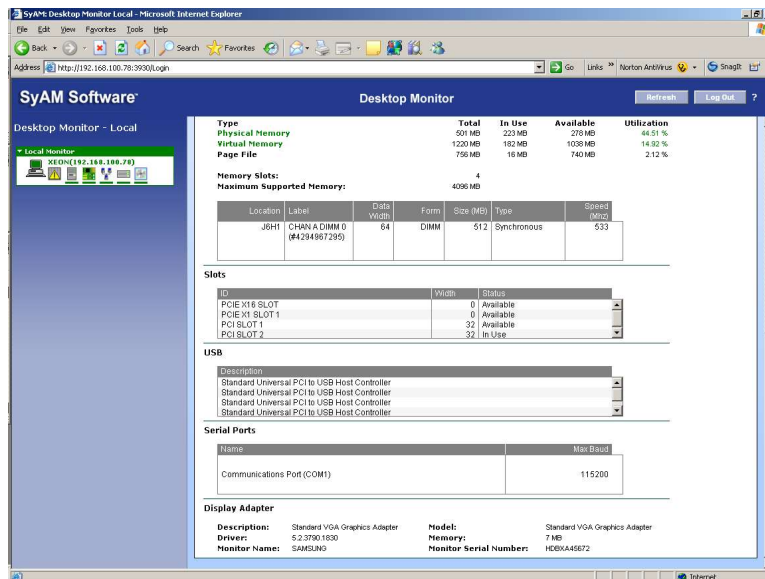


Figure 14: System Detail Tab Continued

Monitoring Memory Errors

SyAM provides real time monitoring and alerting of single- and multi-bit memory errors on systems with supported ECC Memory error monitoring.

The default alerting thresholds are to notify the administrator immediately on a multi-bit error or when two single-bit errors occur within a day.

Through the SyAM Central Manager the administrator can adjust the thresholds and polling interval periods for both single- and multi-bit errors, and configure their notification methods.

Power Management Tab

(This feature is only available through the SyAM Central Manager)

The Power Management tab lets the user display and reconfigure the power management policies for the managed system.

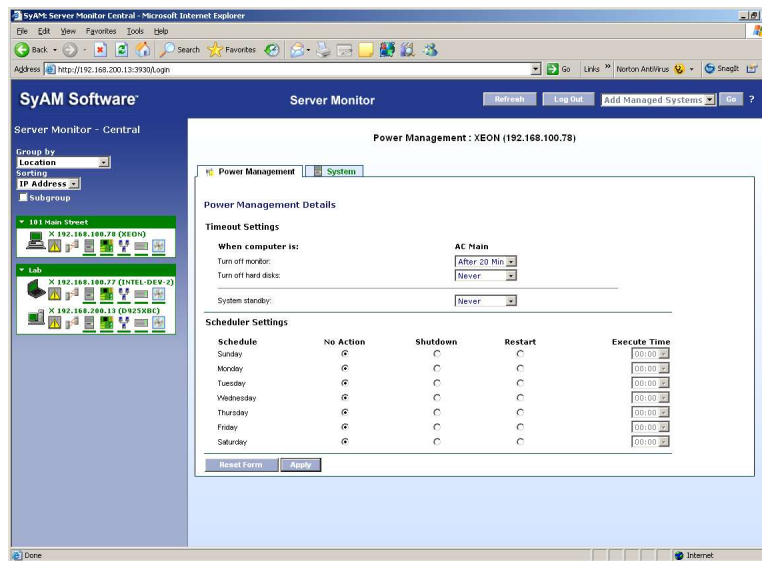


Figure 15: Power Management Tab

Timeout Settings

From here you can configure the power scheme settings for the managed system. If the managed system is a notebook there will be two separate sets of settings: one set that will be applied when connected to AC Power, and the other set for when running on battery.

The options are;

- Turn off monitor
- Turn off hard disks
- System standby
- Hibernate – This will only be displayed if the system has hibernation enabled

Battery

This information is only displayed if the managed system is a notebook.

- Current Power Source – States if the system is plugged in using AC Power Cord or is running from the battery
- Battery Charging – States if the battery is in a charging state.
- Battery Level – Current health state of the battery.
- Battery Charge – The % of the battery life available.

Scheduler Settings

You can configure the managed system to be scheduled to perform a graceful system shutdown or restart at any time for each of the days.

To enable, click on the appropriate radio button for the action to be taken that day. (No Action / Shutdown / Restart). Then set the time using the drop down box.

Different actions can be set at different times for each of the days of the week.

Only one action per day can be scheduled.

Press the Apply Button to save the changes made.

Hardware Detail Tab

All environmental sensors discovered on your platform are displayed in the Hardware Tab. This includes fans, temperatures, voltages, power redundancy loss and physical security. The number and type of sensors displayed is dependent upon the system platform and its configuration.

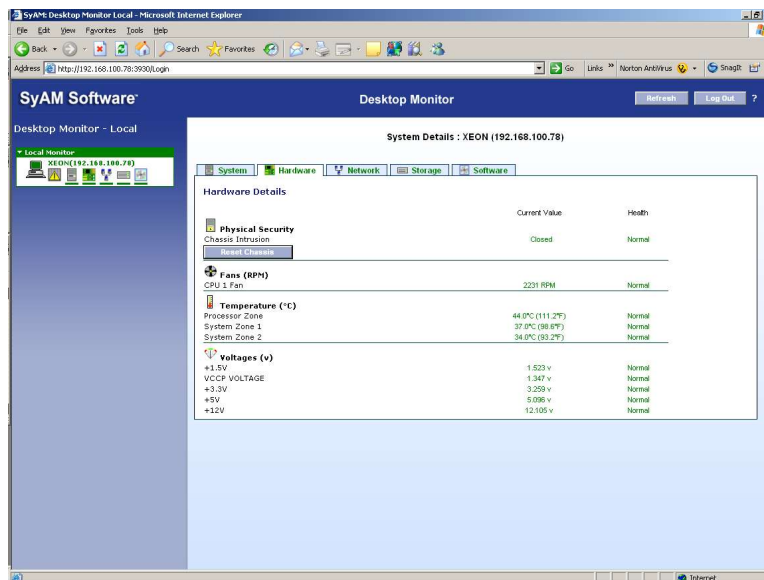


Figure 16: Hardware Detail Tab

Reset Chassis Intrusion

Some hardware platforms that support a chassis intrusion sensor, do not automatically reset the sensor state to normal when the chassis is in closed. For such systems the Reset Chassis button causes the platform to reset the state of the sensor to normal.

Network Detail Tab

The Network Tab displays detailed information on adapters connecting the managed system to the network, including adapter and connection speed, connection status, IP address, and MAC address. Additionally the send and receive byte counts and calculated utilization over the last approximately 20 seconds is provided.

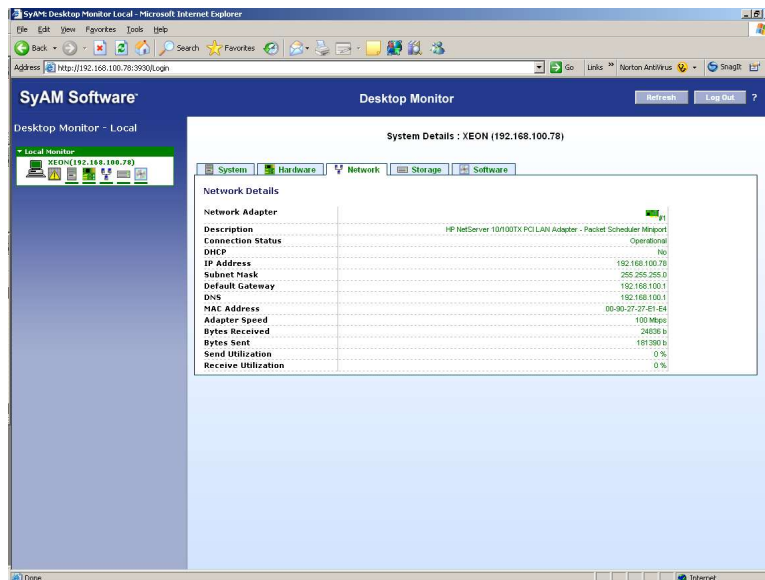


Figure 17: Network Detail Tab

Storage Detail Tab

The Storage Tab displays detailed information on physical and logical disks associated with the system being monitored. Physical disk attributes reported include vendor information, device ID, SCSI ID, and size. Logical disk attributes reported include name, size, space allocation, and utilization.

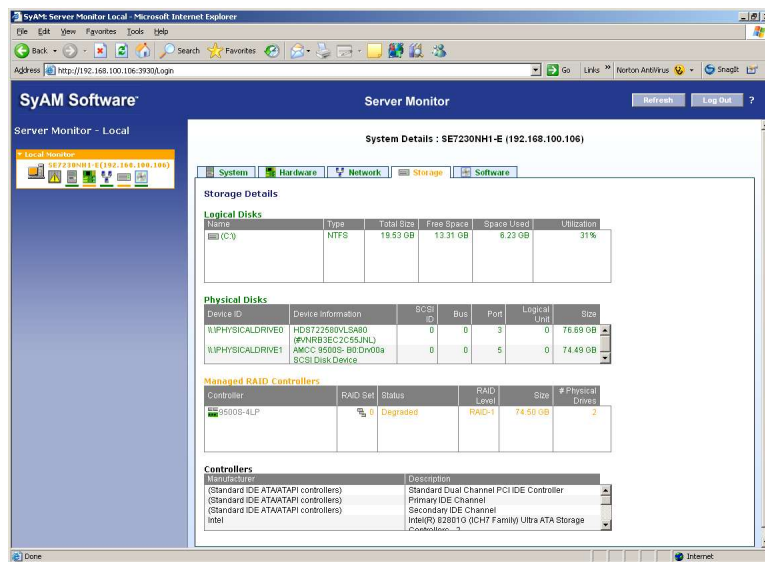


Figure 18: Storage Detail Tab

RAID Management

SyAM Server Monitor performs integrated monitoring of PCI RAID Controllers. All discovered PCI RAID Controllers that we support will be monitored, and their summary configuration and status displayed under "Managed RAID Controllers" within the Storage tab.

SyAM Server Monitor will discover RAID Controllers that it can manage only if the required RAID drivers are installed. If a new RAID Controller is installed after SyAM Server Monitor has been started, then restart the system for it to discover the new Managed RAID Controller.

Please check the release Notes for the list of RAID Controller compatibility for the version of software you are using.

SMART Drive Pre- Failure Monitoring

Directly attached disk drives that are SMART capable are checked daily. Supported disk technologies include P-ATA, S-ATA, SCSI and FC. The administrator can be notified of bad disk drives before they fail and potentially lose data. Notification of a bad SMART status (Pending failure) is done via the notification options configured for the drive.

The Storage Details tab visually shows physical drive status. A physical drive in the warning state (amber colored) is pending failure and has reported a bad SMART status.

RAID Management

(This feature is only available through SyAM Server Monitor Central)

Managed PCI RAID controllers can be configured with SyAM Server Monitor Central. Navigation begins from the Storage Details tab

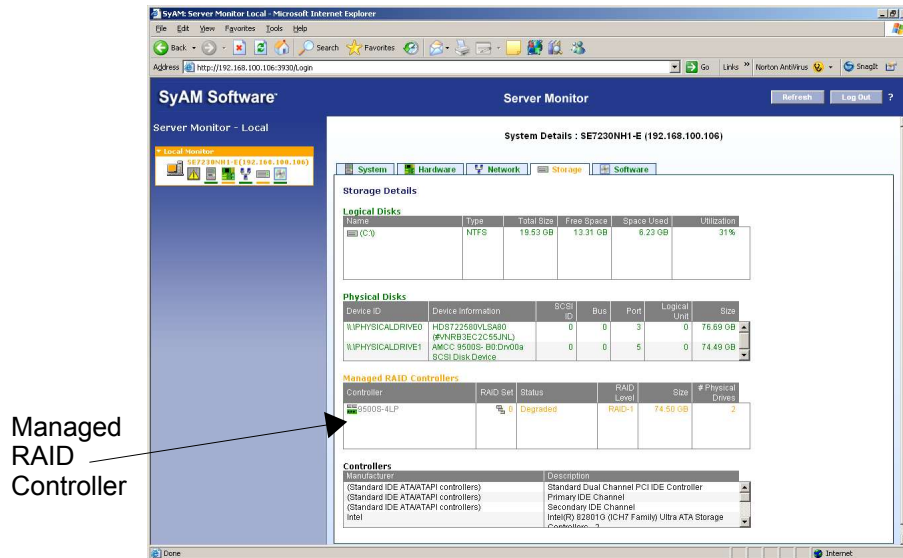


Figure 19: Storage Details – Managed RAID Controllers

Click on the RAID Controller to open up the RAID Controller window.

Please check the www.syamsoftware.com Web Site for RAID Controller Configuration Support.

RAID Controller Details Screen

The RAID Controller screen is divided into 4 parts.

RAID Controller Details – Displays the controller model, firmware version, Cache if present, Number of Bus, ID, BIOS Version, BBU Presence and Max Devices per Buses

RAID Set Details – Displays the current RAID sets configured on this controller, including their description , RAID Set #, and Status (Normal, Init, Rebuild, Degraded, Failed). A RAID Set (also called a RAID Array) appears to the operating system as a physical disk.

Physical Drives – Displays the physical drives connected to the RAID controller, including their location on the BUS, ID, Status, Capacity, Vendor and Model. Physical drives in use by a RAID controller are typically not visible to the operating system.

Available Arrays – Displays the physical arrays defined by the RAID controller. A physical array is a grouping of drives on which RAID Sets are created. The display includes the RAID levels and capacities available for creating additional RAID sets.

RAID Controller Details : SE7230NH1-E (192.168.100.106)

RAID Controller

Storage

RAID Controller Details

RAID Controller Model: 9500S-4LP

Controller ID: 0

Firmware version: FE9X 2.04.00.005

BIOS version: BE9X 2.03.01.047

Controller Cache Memory:

BBU Presence: Normal

Number of Buses: 4

Max Device per bus: 1

Mute Alarm

Rescan

RAID Set Details

RAID Set #	Status	RAID Level	Capacity (MB)	# Drives in RAID set	Caching	Stripe Size	Array #
C 0	Degraded	RAID-1	74.59 GB	2	Disabled		0

Delete RAID Set

Physical Drives

Choose the physical drive(s) to create an Array or add as Spare.

Channel 0

ID 2 Full - Array # 0
76.33 GB
Maxtor 6Y080M0

ID 3 Free
76.33 GB
Maxtor 6Y080M0

Create Array

Add Global Spare

Remove Global Spare

Available Arrays

Array #	# Drives in Array	Free Space (MB)	RAID Level	Capacity (MB)	Caching	Stripe Size
0	1	0		0	Disabled	64 KB

Create RAID Set

Delete Array

Figure 20: RAID Controller Details Screen

Steps in Creating a RAID Set

1. Decide if you will create a RAID Set on an existing Physical Array, or want to first create a new Physical Array for the RAID Set. If you will use an existing Physical Array proceed to step 4.
2. To create a Physical Array, choose the physical drives that you wish to make up the array by clicking on their check box. (Remember only drives not in use in other arrays or as hot spares can be used.)
3. Click on the Create Array button – wait for the screen to update



Figure 21: Physical Drives – Choosing drives for the Array

4. Now click on the Physical Array that you wish to create the RAID Set on. (**Physical Arrays with no available capacity will not display any available RAID Set configurations.**)
5. Choose the RAID level from the drop down box. Only RAID levels supported for the particular set of drives in the Physical Array will be presented. The maximum capacity available for the selected RAID level is calculated and displayed. You may enter a lower capacity to be used for this RAID Set.



Figure 22: Available Array - Configuring the RAID Set

6. Next choose the Caching policy and stripe size from the drop down boxes.
7. Click the Create RAID Set button to create the RAID Set.
8. The system will now process your configuration and will create the RAID Set. If for any reason the create operation fails, a message will be displayed at the top of the screen explaining the cause for failure.
9. The new RAID Set will now appear under the RAID Set Details
10. If you created a Physical Array in Step 3 and decided not to create a RAID Set on it, you may dismiss it by selecting it and clicking the Delete Array button . You cannot delete Physical Arrays that have RAID Sets created on them.

RAID Controller

RAID Controller Details

RAID Controller Model: 8506-4LP
Firmware version: FE7S 1.05.00.06
Controller Cache Memory: 4
Number of Buses: 4

Controller ID: 0
BIOS version: BE7X 1.08.00.04
BBU Presence: Unknown
Max Device per bus: 1

Mute Alarm
Rescan

RAID Set Details

RAID Set #	Status	RAID Level	Capacity (MB)	# Drives in RAID set	Caching	Stripe Size	Array #
0	Init 3%	RAID-5	74.54 GB	3	Disabled	64 KB	0

Delete RAID Set

Figure 23: RAID Set Details – Information on Configured RAID Set

Adding/Removing a Global Spare

1. Choose the physical drive that you wish to become a global spare to the RAID Set by clicking on its check box, then click on the Add Global Spare button.
2. To remove a global spare click on the check box next to the drive that is currently displayed as a hot spare, then click the Remove Global Spare button.

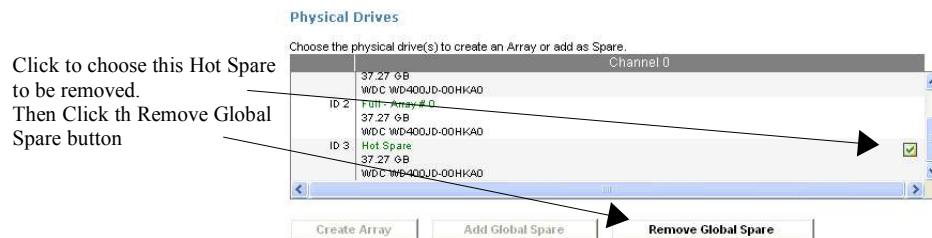


Figure 24: Removing a Hot Spare drive

Deleting a RAID Set

1. Under RAID Set Details click the radio button next to the RAID Set to delete. Then click on the Delete RAID Set button. Note that when multiple RAID Sets are present on the same Physical Array, only the last RAID Set displays a radio button and may be selected to delete.

The screenshot shows the RAID Controller interface. At the top, there are tabs for 'RAID Controller' and 'Storage'. Below the tabs, the 'RAID Controller Details' section displays the following information:

RAID Controller Model:	8506-4LP	Controller ID:	0
Firmware version:	FE7S 1.05.00.06	BIOS version:	BETX 1.08.00.04
Controller Cache Memory:		BBU Presence:	Unknown
Number of Buses:	4	Max Device per bus:	1

Below this information are two buttons: 'Mute Alarm' and 'Rescan'.

The 'RAID Set Details' section contains a table with the following columns: RAID Set #, Status, RAID Level, Capacity (MB), # Drives in RAID set, Caching, Stripe Size, and Array #.

RAID Set #	Status	RAID Level	Capacity (MB)	# Drives in RAID set	Caching	Stripe Size	Array #
0	Normal	RAID-5	74.54 GB	3	Disabled	64 KB	0

Below the table is a 'Delete RAID Set' button. Arrows point from the 'Delete RAID Set' button and the RAID Set # '0' to a text box on the right.

Click the button to choose the RAID Set to be deleted, then click the Delete RAID Set button

Figure 25: RAID Set Details – Deleting a RAID set

Software Detail Tab

The Software Tab displays detailed information on the processes, services, and applications installed and running on the system being monitored.

End Process – Start/Stop Service

(This feature is only available through the SyAM Central Manager)

The administrator can stop a running process, and start or stop a service of a managed system, without having to physically visit that system. The startup type and current status of each service is displayed.

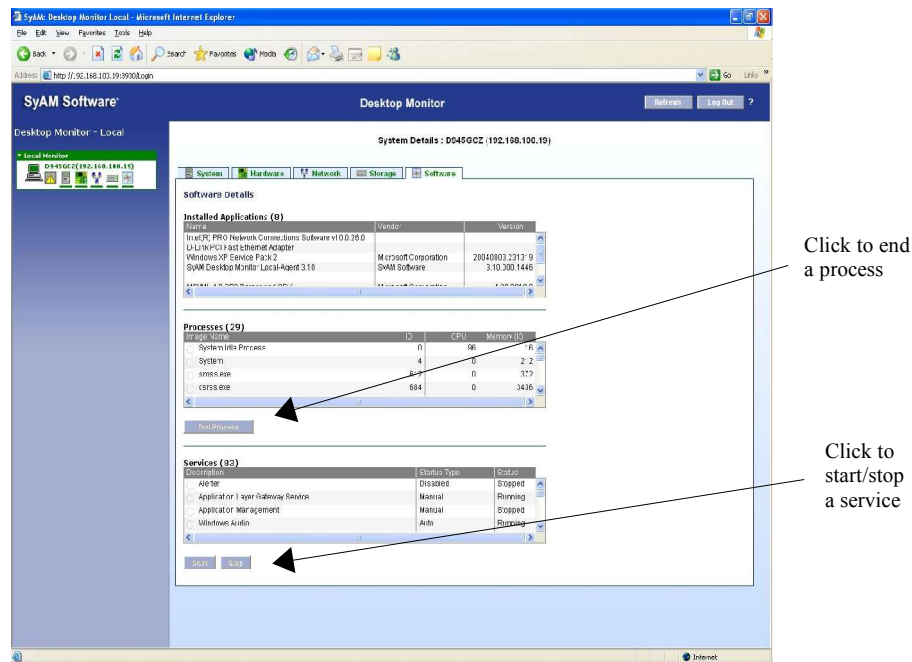


Figure 26: Software Detail Tab

To end a process, choose the process by clicking on the radio button to the left of the Process Name, then click the End Process button.

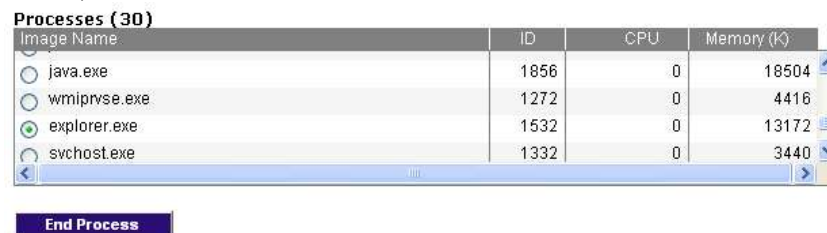


Figure 27: End the Process



Figure 28: Confirm to End the Process

To Start a Service choose the service by clicking on the radio button to the left of the Service Name, then click on the Start button. The service must be in a stopped state in order to be started.



Figure 29: Starting a Service



Figure 30: Confirm to Start the Service

To Stop a Service choose the service by clicking on the radio button to the left of the Service Name, then click on the Stop button. The service must be in a running state in order to be stopped.



Figure 31: Stopping a Service

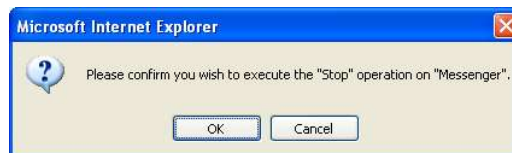


Figure 32: Confirm to Stop the Service

Chapter 4: Configuring System Alerts

SyAM Local System Management software provides the ability to send alerts via email. SyAM Central System Management software provides a much richer set of alerting features. A whole new hierarchy of centralized alerting is available. And additional alerting features within each managed system are unlocked by using Central System Management. Users may configure thresholds, and sample/reset periods for each monitored resource. And several new notification methods become available, such as via SNMP Traps or Operating System Event Logs.

System Alert Matrix

The System Alert Matrix provides a detailed, color-coded view of the status of all monitored components in the managed system.

Settings such as notification methods, thresholds, sample periods, etc for each sensor type category are automatically applied to all discovered sensor instances of that type.

Figure 33: System Alert Matrix

Alerts : Server Monitor Local : SE7501WV2 (127.0.0.1)

System Alert Matrix

Physical Sensors		Lower Threshold		Upper Threshold		No Alerts		Warning Alerts					Critical Alerts					
Description	Critical	Warning	Current	Warning	Critical	No Monitoring	Email	SMS /Pager	SMC	Network Message	SNMP Trap	System Event Log	Email /Pager	SMS	SMC	Network Message	SNMP Trap	System Event Log
Physical Security						<input type="checkbox"/>	<input checked="" type="checkbox"/>	<input type="checkbox"/>	<input type="checkbox"/>	<input checked="" type="checkbox"/>	<input checked="" type="checkbox"/>	<input checked="" type="checkbox"/>						
Fans (RPM)						<input type="checkbox"/>	<input checked="" type="checkbox"/>	<input type="checkbox"/>	<input type="checkbox"/>	<input checked="" type="checkbox"/>	<input checked="" type="checkbox"/>	<input checked="" type="checkbox"/>	<input checked="" type="checkbox"/>	<input type="checkbox"/>	<input checked="" type="checkbox"/>	<input checked="" type="checkbox"/>	<input checked="" type="checkbox"/>	<input checked="" type="checkbox"/>
Temperature (°C)						<input type="checkbox"/>	<input checked="" type="checkbox"/>	<input type="checkbox"/>	<input type="checkbox"/>	<input checked="" type="checkbox"/>	<input checked="" type="checkbox"/>	<input checked="" type="checkbox"/>	<input checked="" type="checkbox"/>	<input type="checkbox"/>	<input checked="" type="checkbox"/>	<input checked="" type="checkbox"/>	<input checked="" type="checkbox"/>	<input checked="" type="checkbox"/>
Voltages (v)						<input type="checkbox"/>	<input checked="" type="checkbox"/>	<input type="checkbox"/>	<input type="checkbox"/>	<input checked="" type="checkbox"/>	<input checked="" type="checkbox"/>	<input checked="" type="checkbox"/>	<input checked="" type="checkbox"/>	<input type="checkbox"/>	<input checked="" type="checkbox"/>	<input checked="" type="checkbox"/>	<input checked="" type="checkbox"/>	<input checked="" type="checkbox"/>
Power Unit						<input type="checkbox"/>	<input checked="" type="checkbox"/>	<input type="checkbox"/>	<input type="checkbox"/>	<input checked="" type="checkbox"/>	<input checked="" type="checkbox"/>	<input checked="" type="checkbox"/>						

Restore Physical Sensor Thresholds

Logical Sensors		Current		Threshold		No Alerts		Alerts					Intervals	
Description						No Monitoring	Email	SMS /Pager	SMC	Network Message	SNMP Trap	System Event Log	Sample Period	Reset Period
Network Adapters						<input type="checkbox"/>	<input checked="" type="checkbox"/>	<input type="checkbox"/>	<input type="checkbox"/>	<input checked="" type="checkbox"/>	<input checked="" type="checkbox"/>	<input checked="" type="checkbox"/>		
Physical Disks						<input type="checkbox"/>	<input checked="" type="checkbox"/>	<input type="checkbox"/>	<input type="checkbox"/>	<input checked="" type="checkbox"/>	<input checked="" type="checkbox"/>	<input checked="" type="checkbox"/>		
Logical Disks		90				<input type="checkbox"/>	<input checked="" type="checkbox"/>	<input type="checkbox"/>	<input type="checkbox"/>	<input checked="" type="checkbox"/>	<input checked="" type="checkbox"/>	<input checked="" type="checkbox"/>	8 Hr	180 Hr
CPU Utilization (%)		90				<input type="checkbox"/>	<input checked="" type="checkbox"/>	<input type="checkbox"/>	<input type="checkbox"/>	<input checked="" type="checkbox"/>	<input checked="" type="checkbox"/>	<input checked="" type="checkbox"/>	4 Min	15 Min
Memory Utilization (%)		90				<input type="checkbox"/>	<input checked="" type="checkbox"/>	<input type="checkbox"/>	<input type="checkbox"/>	<input checked="" type="checkbox"/>	<input checked="" type="checkbox"/>	<input checked="" type="checkbox"/>	4 Min	15 Min
Memory Error Rate		2				<input type="checkbox"/>	<input checked="" type="checkbox"/>	<input type="checkbox"/>	<input type="checkbox"/>	<input checked="" type="checkbox"/>	<input checked="" type="checkbox"/>	<input checked="" type="checkbox"/>	24 Hr	24 Hr






Notification Settings

Email Address	admin@syamsoftware.com	Example	admin@company.com
SMS/Pager Address			
Network Message Machine Name			192.168.1.1
SMC System	192.168.200.13		192.168.1.1
Username	username		Username
Sender's Email Address	admin@syamsoftware.com		Local.Admin@company.com
Sender's Email Password	*****		
Mail Server	mailserver.syamsoftware.com		smtp.company.com
SNMP Trap Receiver			snmp.company.com








Reset Form Test Notifications Apply

Monitored Sensor Types

Physical Sensors

	Security – If/when the system chassis is opened, the intrusion will trigger a sensor alert, provided that the connected board/BIOS support this information reporting.
	Fans – Monitored for rotational speed provided the fan is connected to a board/BIOS that supports the information reporting.
	Voltages – Monitored for the functionality that the connected board/BIOS supports.
	Temperature – Monitored for the functionality that the connected board/BIOS supports.
	Redundant Power Loss – Monitors IPMI managed servers and alerts upon when redundant power systems loose their redundancy

Logical Sensors

	Network Adapters – Monitors Ethernet operational state.
	Physical Disk – Monitors the presence and percent usage of a physical disk in the system and/or a RAID Set available to the operating system through a RAID controller.
	Logical Disks – The percent of capacity used by the logical disk formatted and mounted by the operating system is reported. If the disk has not been formatted, it will be reported as a failed disk. Removable Device – Removable devices that are represented to the operating system will be reported as mounted as long as they are present in the system.
	Managed RAID Controller – RAID Controller health.
	Total CPU utilization – Percentage of CPU usage.
	Total Memory utilization – Percentage of Physical and Virtual Memory usage.
	Memory Error Rate – Number of Single- and Multi- Bit errors that have occurred (requires ECC memory and support by the server board)

Notification Settings – Configuring email alerting

Notification Settings

Email Address	admin@syamsoftware.com
SMS/Pager Address	
Network Message Machine Name	XEON
DMC System	192.168.200.13
Username	username
Sender's Email Address	admin@syamsoftware.com
Sender's Email Password	*****
Mail Server	mailserver.syamsoftware.com
SNMP Trap Receiver	

Figure 34: Entering Notification Information

Physical Sensor Upper and Lower Thresholds

Each physical sensor instance has its own range of safe operating values with lower and upper warning and critical thresholds. These values are discovered if the hardware platform supports that information, or are calculated from available data.

Physical Sensor Warning and Critical Alerts

Since physical sensors may enter warning or critical health states, separate alerting methods may be configured for each.

Logical Sensor Thresholds

Monitored resources that are not physical sensors are called "Logical Sensors". Each instance of the logical sensor types Logical Disk, CPU Utilization, and Memory Utilization, has a utilization threshold.

Logical Sensor Warning Alerts

Logical sensors, by design, may enter the warning health state but not critical. So there is only a single set of alerting methods available.

Sample Period

CPU and Memory Utilization are gathered several times over a period of time, so that transient spikes are not reported. This time period is configurable by the administrator, and is known as the sample period. The pre-set sample period options are from 4-8 minutes. If 80% of the gathered readings exceed the threshold, a transition to warning state occurs.

The sample period for an instance of Logical Disk that is a removable device (floppy or CD-ROM drive) is similar to that of other sensors. A set of four readings is gathered during the sample period. If the device (floppy disk or CD) is present through all of them, a transition to warning state occurs.

Reset Period

When a logical sensor transitions to a warning health state, an event is raised and alerts are sent according to the Warning Alerts settings. The reset period is the amount of time during which no additional alerts will be issued after the initial alert.

Removing a Sensor Instance From the System Alert Matrix

When a sensor instance, such as a specific logical or physical disk, has been removed from the system, or has otherwise entered a critical state, it is displayed in red and an "X" appears next to it. Click on the "X" to permanently delete this sensor instance from the alert matrix. Only do this if the instance is not being replaced. Once the sensor has been replaced it will automatically be monitored and the new health state will be represented.

Enter the destination email address, the sender's email address, and the mail server hostname or IP address. Enter the user name and password if outgoing email is authenticated. Click the Apply button to save changes. Use the Test Notification button to send a test email, and ensure your configuration is correct.

SyAM Alerting Enhancements

(These features are only available through the SyAM Central Manager)

When a system is managed from the SyAM Central Manager, it enables users to modify any of the thresholds, sample periods, reset periods, and notification methods. It also enables alerts to be sent via the other notification methods such as SMS/pager, Network Message, send to the SyAM Central Manager (for it to perform central alerting methods), SNMP Trap, or write the event to the System Event Log.

SyAM Integration into Enterprise Frameworks

System Area Management (SyAM) MIB

The SyAM MIB must be installed into the Enterprise Framework server before it can decipher traps sent from a managed system.

Please consult your Enterprise Framework application on how to install a 3rd party MIB.

The MIB file is installed in <Installed Directory>/system_monitor/syam.mib.

System Area Management (SyAM) Integration into Microsoft Operations Manager (MOM)

The SyAM Management Pack for Microsoft Operations Manager must be loaded into the MOM server, before it can decipher Windows events written by SyAM Management Agents. Also the MOM agent must be configured on each managed system to forward events to the MOM server.

Please consult your MOM documentation on how to load 3rd party Management Packs into the MOM server, and how to configure the MOM agent.

The MOM Management Pack file is installed in:
<InstalledDirectory>/system_monitor/syam.akm.

Chapter 5: Contact Details & Glossary

This chapter contains technical support contact information as well as a glossary.

Contact Details

Contact	product-support@syamsoftware.com
Web	www.syamsoftware.com
Support Information	http://www.syamsoftware.com/
Product Information	http://www.syamsoftware.com/

Glossary

Adding a sensor to the alert matrix

Sensors are automatically monitored, they have their sensor category default notifications applied to them.

Critical Level

The level of the threshold which is operating beyond the normal and warning thresholds.

Current Value

The actual reported sensor reading for the system component on a timed reporting cycle.

From Address

Administrators can define a unique name for the SyAM alerting email address.

Hardware Detail Screen

Information on the system components being monitored, including fans, temperature, voltages, etc.

Hardware Event

When a threshold is met or exceeded by a physical component of the system.

Header Bar

The header bar within this browser contains the <Logout> <Refresh> <?> function buttons

Health colors

Green	= Fully Functional
Amber	= Warning threshold exceeded
Red	= Critical Threshold exceeded
Grey	= System update pending
Blue	= Agent has been manually stopped
Purple	= System is no longer responding
Black	= System has been shut down

Intervals

Readings on all monitored systems and components are at preset cycles of 20 seconds.

Logical Sensor

Storage, network adapters, removable disk drives, and CPU and memory usage.

Login

Administrators must login using a user name and password that has administrative rights to the machine that is running SyAM software

Lower threshold

The lowest threshold to be alerted upon if it is exceeded.

Network Detail Screen

Information on network adapters and their configuration.

Network Event

Network connectivity is lost.

Notification Settings

Email, SMS/pager, SyAM-Server Central, Network Messages and SNMP Traps.

Performance utilization event

CPU or memory utilization threshold is met or exceeded.

Physical Sensors

Physical Security, Fans, Temperature, Voltages and Power Unit sensor monitored

Reset period

The frequency of notifications sent after the initial alert has been sent and if the sensor has not been corrected.

Restore Physical Sensor Thresholds

This will reset to the original sensor threshold values when you click on this button.

Sample period

Time that is used to take CPU and Memory utilization samples.

Sensor Status Change back to normal

When a sensor returns back to within its operating threshold range.

SyAM Agent

Non-intrusive monitoring agent configured and managed by the SyAM Central Manager

SyAM Central Manager

Provides monitoring and communications with all managed agents

SyAM Local

Non-intrusive monitoring agent that can be browsed to directly or managed and configured from the SyAM Central Manager

SyAM Local Tree

Browsing directly to a system running SyAM Local.

SMTP address

Mail system address: example: mail.company.com or 192.168.1.100

SNMP Traps

Notification from a system or central manager to an enterprise framework server – Requires System Area Management (SyAM) MIB to be installed on enterprise framework server.

Software Detail Screen

Information on the processes, services, and applications installed.

Storage Detail Screen

Information on physical and logical disks, controllers and removable devices.

Storage Event

Logical disk has reached its utilization threshold, Loss of logical disk, or Loss of Physical disk.

System Alert Matrix

Interface to configure sensor thresholds and notification options.

System Alert Notification Settings

Notification and configuration details for the System Alert matrix.

System Detail Screen

Information on the system's configuration, BIOS, operating system, location, memory, CPU, etc.

Upper Threshold

The highest threshold to be alerted upon if exceeded.

User name and Password for outgoing Authentication

Enter the administrator user name and password (if the outgoing email system requires authentication)

Warning Level

The level of the threshold that is operating between the normal and critical thresholds.

Welcome

Displays the Revision and contact details for the product.

Chapter 6: SyAM Central Management Software

This chapter contains information on the enhancements available with a SyAM Central Manager

Differences between SyAM Local and SyAM Centralized Management.

The following table lists the features available when managing systems from a Central Manager (Server Monitor Central or Desktop Monitor Central) vs managing systems locally (with Server Monitor Local, Desktop Monitor Local, or Notebook Monitor Local).

Feature	SyAM Local Management	SyAM Central Manager
System Level Alerting <ul style="list-style-type: none"> Email SMS/Pager SyAM Central Event Log SNMP (Enterprise Managers) System Event Log (MOM) Thresholds Sample Periods Reset Periods 	■	■ ■ ■ ■ ■ ■ ■
Centralized Alerting <ul style="list-style-type: none"> Email SMS/Pager SNMP 		■ ■ ■
Centralized Monitoring <ul style="list-style-type: none"> System Absence Platform Event Traps (PETs) Asset Changes 		■ ■ ■
Remote Management <ul style="list-style-type: none"> Graceful Shutdown/Restart Remote Console (KVM) IPMI Over LAN (Power on/off) IPMI Over LAN (Event Log) AMT Remote Power functions AMT Remote Control AMT System Defense 		■ ■ ■ ■ ■ ■ ■
Storage Management <ul style="list-style-type: none"> Logical Utilization Monitoring Removable Device Monitoring RAID Monitoring RAID Configuration / Management 	■ ■ ■	■ ■ ■ ■
Software Management <ul style="list-style-type: none"> End Process Start/Stop Service 		■ ■
Power Management <ul style="list-style-type: none"> Power Policy Configuration Power shutdown/Restart Scheduler 		■ ■
Event Logging <ul style="list-style-type: none"> Monitored event logging Performance Snapshot Event Filtering / Sorting Output to file 		■ ■ ■ ■

Feature	SyAM Local Management	SyAM Central Manager
Asset / Inventory Reporting <ul style="list-style-type: none"> • Summary • Detailed • CSV / HTML / XML output 		<div>■</div> <div>■</div>